

PHILIPS

Lighting



INDIA TRADE **CATALOGUE** 2022







Contents

04-13 LED Lamps

14-19 Wi-Fi LED
Lights

20-23 T-Bulb

24-35 LED Battens

36-47 LED
Luminaires

48-59 Home

60-65 CFL and
GLS

66-71 TL

72-77 Modular
Switches

78-87 Lighting
Accessories

88-91 UVC
Range



Live life to the fullest

Philips LED Lamps

Not only are LED lamps good for the environment, but they are also great for your pockets as they use 85% less energy than incandescent bulbs. Ranging from 0.5-50W, the unique and durable LED lamps offered by Philips come with a better light spread, a guarantee of minimum 10,000 life hours and 1 year warranty.

LED Lamps



Ace Saver 2 Star

2.7W, 4W

Specifications:

- 2.7W: 230 lm, 4W: 350 lm
- Available in CDL and WW; B22 and E27
- Replaces 5W and 8W CFLi

HSN Code: 85395200

MRP: ₹130, ₹135



Eye Pro 3 Star

5W, 7W, 9W, 10.5W

Specifications:

- 5W: 525 lm, 7W: 740 lm, 9W: 950 lm, 10.5W: 1050 lm
- Patented interlaced optics technology
- 10,000 life hours
- Available in CDL; B22 and E27

HSN Code: 85395200

MRP: ₹140, ₹155, ₹220

Ace Saver 2 Star

7W, 9W

Specifications:

- 7W: 630 lm, 9W: 825 lm
- Available in CDL, WW, B22 & E27

HSN Code: 85395200

MRP: ₹140, ₹155





StellarBright Super High Wattage

30W, 40W, 50W

Specifications:

- 30W: 3000 lm, 40W: 4000 lm, 50W: 5000 lm
- 15,000 life hours
- Available in CDL B22 and E27 and WW B22 in 40W
- Replaces 45W, 65W and 80W CFLi

HSN Code: 85395200

MRP: ₹750, ₹1050, ₹1350

Emergency T-Bulb

10W

Specifications:

- Power back-up upto 4 hours
- Lumen output becomes upto 50% when on battery mode
- Battery: Li-ion battery
- Base cap: B22
- Better light-spread than normal bulb in Emergency T-Bulb
- 1 year warranty

HSN Code: 85395200

MRP: ₹749



Emergency T-Beamer

20W

Specifications:

- Power back-up upto 4 hours
- Lumen output becomes upto 50% when on battery mode
- Battery: Li-ion battery
- Base cap: B22
- Better light-spread than normal bulb in Emergency T-Beamer
- 1 year warranty

HSN Code: 85395200

MRP: ₹899



Candle

2.7W, 4W

Specifications:

- 2.7W: 250 lm, 4W: 400 lm
- 10,000 life hours
- Available in CDL, WW, E27, B22 and E14, frosted and clear

HSN Code: 85395200

MRP: ₹160, ₹230



Deco Candle

0.5W

Specifications:

- Available in 5 colors
- 0.5W: 250 lm, 4W: 400 lm
- 10,000 life hours
- Available in B22
- Eco-friendly, made of glass

HSN Code: 85395200

MRP: ₹99

Deco Mini and Joy Vision

0.5W

Specifications:

- Choose from a Deco Mini B22 variant or a plug and play Joy Vision
- Deco Mini available in 7 colors and Joy Vision in 3 colors
- Use for mandir, puja room, as a night lamp or for decoration purposes

HSN Code: 85395200

MRP: ₹70, ₹150





Deco Bright 5W

Specifications:

- 15x more light output compared to Deco Mini
- Extra brightness and choice of colors
- For houses, pandals and shops
- Available in Red, Green, Blue and Yellow light color
- Long life of upto 10,000 hrs
- Base cap : B22

HSN Code: 85395200

MRP: ₹200

StellarBright Inverter Lamp

8W, 9W, 12W, 18W

Specifications:

- Power back-up upto 4 hours
- Lumen output becomes upto 50% when on battery mode
- Battery: Li-ion battery
- Base cap: B22
- 1 year warranty

HSN Code: 85395200

MRP: ₹499, ₹549, ₹649, ₹999



FullGlow Frosted LED Lamp 9W

Specifications:

- Lumen: 825
- Available in Crystal White-6500K
- Environment-friendly glass material
- ROHS compliant
- High voltage and surge protection
- Fire retardant material
- Base cap: E27

HSN Code: 85395200

MRP: ₹165

FullGlow Frosted LED Lamp

9W

Specifications:

- Lumen: 825
- Available in Crystal White and Yellow-6500K
- Environment-friendly glass material
- ROHS compliant
- High voltage and surge protection
- Fire retardant material
- Base cap: B22

HSN Code: 85395200

MRP: ₹165



FullGlow Clear LED Lamp

9W

Specifications:

- Lumen: 850
- Available in Crystal White-6500K
- Environment friendly Glass material
- ROHS compliant
- High voltage and surge protection
- Fire retardant material
- Base cap : B22

HSN Code: 85395200

MRP: ₹165



FullGlow Clear LED Lamp

9W

Specifications:

- Lumen: 700
- Available in Warm White-2700K
- Environment-friendly glass material
- ROHS compliant
- High voltage and surge protection
- Fire retardant material
- Base cap: B22

HSN Code: 85395200

MRP: ₹165





G95 LED Lamp

8W

Specifications:

- Lumen: 600
- Available in Warm White-2700K
- Environment-friendly glass material
- ROHS compliant
- High voltage and surge protection
- Fire retardant material
- Base cap: B22 & E27

HSN Code: 85395200

MRP: ₹249

Filament LED Lamp

4W

Specifications:

- Available in Warm White-2700K
- Environment-friendly glass material
- ROHS compliant
- High voltage and surge protection
- Fire retardant material
- Base cap: B22

HSN Code: 85395200

MRP: ₹299



Filament Bulb

4W, 8W

Specifications:

- 4W: 350 lm, 8W: 700 lm
- CRI 80
- Environment-friendly glass material
- Power factor: > 0.5
- Surge protection upto 2.5 kV
- Base cap: E27

HSN Code: 85395200

MRP: ₹249, ₹349

Filament Bulb

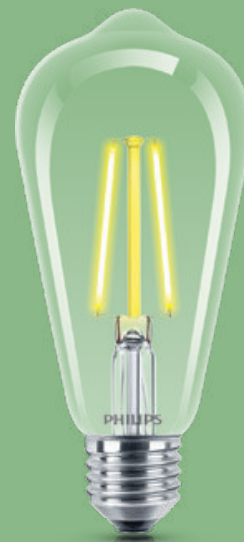
4W, 8W

Specifications:

- 4W: 350 lm, 8W: 700 lm
- CRI 80
- Environment-friendly glass material
- Power factor: > 0.5
- Surge protection upto 2.5 kV
- Base cap: E27

HSN Code: 85395200

MRP: ₹299, ₹399



Filament Bulb

4W, 8W

Specifications:

- 4W: 350 lm, 8W: 600 lm
- Upto 90% energy saving
- Power factor: > 0.5
- Environment-friendly glass material
- Surge protection upto 2.5 kV
- Base cap: E27
- Color: Amber

HSN Code: 85395200

MRP: ₹299, ₹399

Filament Candle

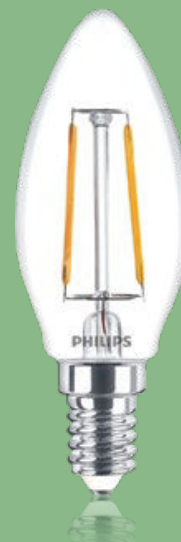
4W

Specifications:

- 4W: 350 lm
- Power factor: > 0.5
- Environment-friendly glass material
- Surge protection upto 2.5 kV
- Base cap: E14

HSN Code: 85395200

MRP: ₹249





Smart lighting made easy

Philips Wi-Fi LED Lights

Works with:



Google Assistant



amazon alexa



Apple HomeKit



The ultimate lighting experience where lighting gets smarter, simpler, better, more responsive and connected to life around. Create unique experiences, add accents to your rooms, and make them glow with stunning lighting ambiances and many colors to choose from.

Brighten up your life with lights that reflect your mood, let you relax, listen to you and give you round-the-clock convenience.

Wi-Fi LED Lights



works with the
Google Assistant

works with
alexa

works with
Siri Shortcuts


EyeComfort
Technology®
No Blue Light Hazard

Smart Lighting made simple

Philips Smart Wi-Fi LED Lights



Privacy
guaranteed



Multi-user,
multi-location



Control
anywhere



Schedules



PHILIPS
Smart Wi-Fi LED



WIZ
App

No need to go from room to room to turn your lights off. With LED smart bulbs you can do it from anywhere using the free, easy-to-use app.



Voice
control

Control some of your smart bulbs with the sound of your voice. Compatible with most voice-activated devices from Amazon and Google, smart bulbs put you in control.



Tunable
white/yellow

Choose tunable white for light that tunes from warm to cool and dims. Tune to cool, energizing light to start a busy day or ease into the evening with soft warm dimmable light. Use your app or voice to comfortably light your routines throughout the day with tunable white.



Circadian
rhythm

Automate your lights with circadian rhythm to wake you up, welcome you home from work or help you drift off to sleep. Set timers and schedules to suit your need.

**NO HUB
NEEDED**



Voice control

works with the
Google Assistant

works with
alexa

works with
Siri Shortcuts

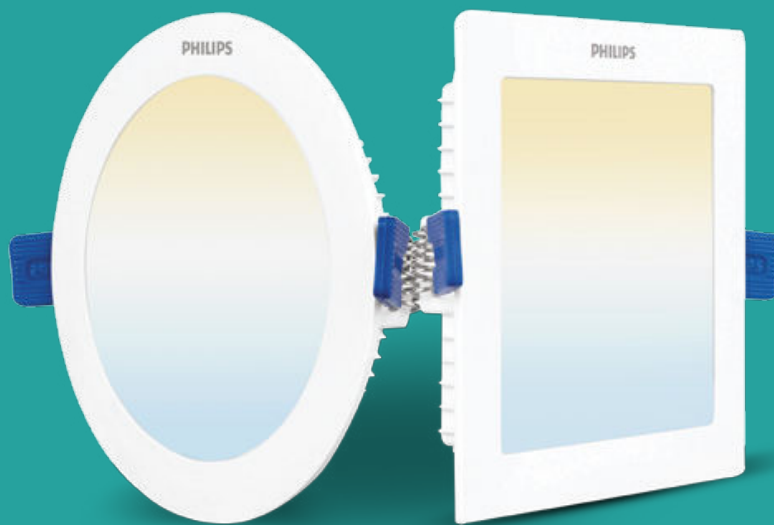


EyeComfort
Technology®

No Blue Light Hazard

Smart Wi-Fi LED Downlight Gen2

5W, 10W, 15W



Specifications:

- Tunable/dimmable white connected downlights
- 2 year warranty
- Wide voltage protection 160V-360V
- Available in 2 shapes – Round and Square

| 12NC | Material Description | MRP (₹) |
|--------------|---------------------------------------|---------|
| 929002654201 | 5W Round Philips Smart Wi-Fi LED DL | 1899 |
| 929002654301 | 5W Square Philips Smart Wi-Fi LED DL | 1899 |
| 929002654401 | 10W Round Philips Smart Wi-Fi LED DL | 2299 |
| 929002654501 | 10W Square Philips Smart Wi-Fi LED DL | 2299 |
| 929002654601 | 15W Round Philips Smart Wi-Fi LED DL | 2699 |
| 929002654701 | 15W Square Philips Smart Wi-Fi LED DL | 2699 |

HSN Code: 94051090

Smart Wi-Fi LED Bulb

Specifications:

- 10W E27 and B22
- Wide Voltage Protection 160V-360V
- Tunable/dimmable color bulb

| 12NC | Material Description | MRP (₹) |
|--------------|------------------------------------------------------|---------|
| 929002487214 | Philips Smart Wi-Fi Full color 10W LED Bulb E27-2049 | 1999 |
| 929002487214 | Philips Smart Wi-Fi Full color 10W LED Bulb B22-2049 | 1999 |

HSN Code: 85395200



Smart Wi-Fi T-Bulb

Specifications:

- T-Bulb 10W 1000 lumen
- T-Bulb 12W 1080 lumen
- Tunable/dimmable white connected

| 12NC | Material Description | MRP (₹) |
|--------------|------------------------------------|---------|
| 929003070913 | T-Bulb 10W White Tunable Wi-Fi B22 | 2199 |
| 929002487214 | T-Bulb 12W White Tunable Wi-Fi B22 | 2249 |

HSN Code: 85395200



Smart Wi-Fi T-Beamer

Specifications:

- T-Beamer 20W 2000 lumen
- Tunable/dimmable white connected

| 12NC | Material Description | MRP (₹) |
|--------------|--------------------------------------|---------|
| 929003071113 | T-Beamer 20W White Tunable Wi-Fi B22 | 2399 |

HSN Code: 85395200

Smart Wi-Fi LED Batten

Specifications:

- Dimmable and tunable white light from 3000K to 6500K
- 24W, Lumens – 2800 lm (@115 lumen per watt for 6500K) Length – 4 ft

| 12NC | Material Description | MRP (₹) |
|-------------|---------------------------------|---------|
| 91951581397 | Batten 24W White Tunable, Wi-Fi | 2499 |

HSN Code: 85395200





A young girl with dark hair, wearing a white t-shirt and patterned pants, is sitting cross-legged on a light-colored rug. She is holding an open book and looking towards the camera with a smile. A white mug is on the rug next to her. In the background, there is a blue tufted sofa and a white wall with a Philips T-Bulb light fixture mounted on it. The light fixture is a long, rectangular, white bulb with a silver base.

Pep up your home with wider lightspread

Philips T-Bulb

Redefining the bulb format, the new Philips T-Bulb is an innovation that provides the lightspread of a mini tubelight along with a futuristic design. The T-Bulbs offer a unique aesthetic shape and a modular angular neck, while retaining the ease of replacement of a conventional bulb.

The Philips T-Bulb offers a wider light throw compared to a regular LED bulb and can be installed in an existing LED bulb socket.

T-Bulb

T-Bulb Curvey

12W, 18W

Specifications:

- 12W: 1100 lm, 18W: 1620 lm, available in 6500K B22
- New attractive convex form factor
- Ease of application:
 - Can be used in existing bulb holder
 - Swivel body action for better adjustment
- 26% wider light spread
- Low glare with better quality diffuser
- Surge protection of 2.5 kV

HSN Code: 85395000

MRP: ₹319, ₹749



T-Bulb

10W, 12W, 14W, 20W, 30W, 40W

Specifications:

- 10W: 1000 lm, 12W: 1200 lm, 14W: 1400 lm, 20W: 2000 lm, 30W: 3000 lm, 40W: 4000 lm
- Innovative design for better lightspread
- Swivel body for better focus and change in the light direction as per requirement upto 35 degrees (up or down)
- 15,000 life hours
- Available in CDL B22 and E27 (WW B22, E27 in 10W)

HSN Code: 85395000

MRP: ₹310, ₹325, ₹450, ₹600, ₹799, ₹899

T-Beamer

20W, 25W

Specifications:

- 20W: 2000 lm, 25W: 2500 lm B22, Plug n play
- Designed to deliver widespread light similar to a regular LED batten
- Wider body (diffuser) than regular LED batten for better eye comfort
- Swivel body for movement to change the light direction as per requirement
- Applications: living room, bed room, shop front, passage, general lighting

HSN Code: 85395000

MRP: ₹419, ₹599



T-Bulb Rangoli

5W

Specifications:

- T-bulb in colored variant for festive decoration
- Red, Green, Blue, Yellow
- Can be used to decorate specific areas in the house
- Wider light spread than any other ordinary bulb
- Low glare with better quality diffuser
- Available in B22 cap

HSN Code: 85395000

MRP: ₹250



26%
Wider
Light Spread*

Philips T-Bulb

Old bulb ko no, **Philips T-Bulb** lo



*12W T-Bulb Curvy in comparison to 9W LED Bulb based on third party lab test.



Quality illumination for a quality life

Philips Batten range

Philips offers best-in-class and innovative LED battens, that emanate high brightness and are energy efficient. These beautiful and powerful battens not only match your home decor perfectly, but also are an ideal replacement of the conventional batten and tube.

LED Battens

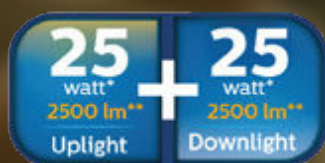
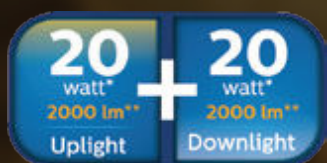




Up to relax Down to work

Philips **TwinGlow**

India's first up-down LED tubelight, with two light modes, to work, relax and do more.



The yellow relax mode uplight, directed towards the ceiling bounces off across the entire room creating a cozy warm feeling.

Relax mode yellow (uplight)



The white work mode
downlight directly focuses
downwards, spreading across
the room to give maximum
light where needed.

Work mode white (downlight)


EyeComfort
Technology[#]

No Blue Light Hazard



TwinGlow

20W+20W

20W Uplight + 20W Downlight
2000 lm + 2000 lm

25W+25W

25W Uplight + 25W Downlight
2500 lm + 2500 lm



Specifications:

- Innovative feature of both Uplight (Relax Mode - Indirect Light) and Downlight (Work Mode - Direct Light)
- Automobile-inspired chrome decal and branding with glistening mirror finish
- Super bright lightspread covers entire room in either mode (Uplight or Downlight)
- Ideal for rooms where false ceiling is not present - to get the ambience of cove light (indirect light) and LED tubelight (direct light) in one single package
- Available in (blue uplight + white downlight) and (yellow uplight + yellow downlight) variants

HSN Code: 94051090

MRP: ₹1499, ₹2999

Work mode



Direct Downlight (white)
Ideal for reading, writing, working etc.

Relax mode



Indirect Uplight (yellow)
Ideal for watching TV, party time, unwinding etc.

Mirolta Pro

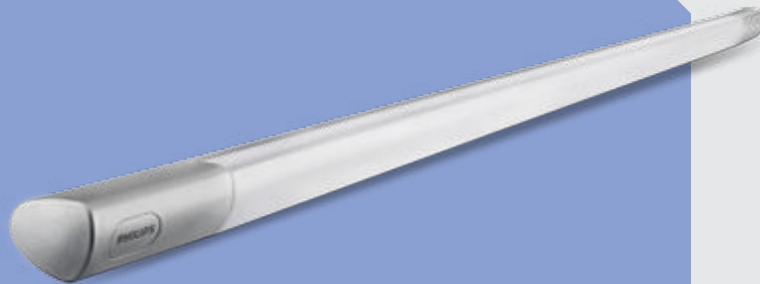
36W: 3600 lm (available in CDL)

Specifications:

- Beautiful and powerful: stunning design to match your living room decor
- Housed in aluminum extrusion for better heat dissipation and longer life
- Wider serrated diffuser for enhanced and uniform lightspread
- Eye Comfort Technology (no blue light hazard)

HSN Code: 94051090

MRP: ₹2199



Mirolta Pro Tunable

30W: 3300 lm (with remote control)

Specifications:

- Operates via the provided remote to match the lighting to your style:
 - 5 step dimming process (high to low)
 - 5 step color modes (3000K to 6500K)
- Beautiful and powerful: artistic design to match your living room decor
- Housed in aluminum extrusion for better heat dissipation and longer life
- Wider serrated diffuser for enhanced and uniform lightspread
- Eye Comfort Technology (no blue light hazard)

HSN Code: 94051090

MRP: ₹2499

Mirolta Essential

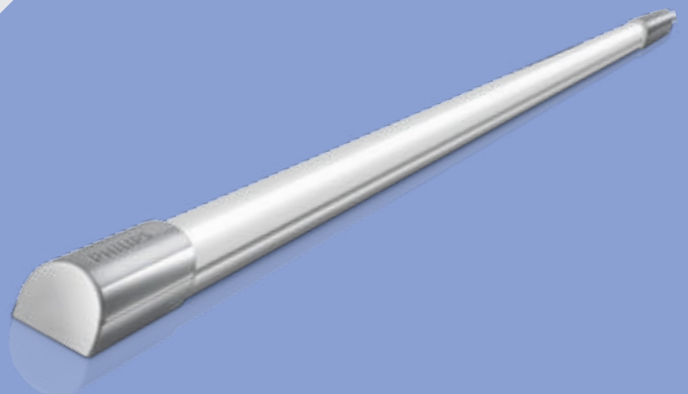
22W: 2000 lm (6500K – CDL)

Specifications:

- Refreshing and unique design to match modern day homes
- Robust metal construction for better heat dissipation and longer life
- Designed for bedrooms and mid-sized spaces
- Delivers 10% higher brightness than regular 20W battens
- Eye Comfort Technology (no blue light hazard)

HSN Code: 94051090

MRP: ₹899



SlimLine Extra Shine

22W: 2200 lm

Specifications:

- High brightness 22W 2200 lm (4ft)
- Batten for domestic & commercial applications
- Designed for home, offices, parking spaces, garages, go-downs and corridors/large spaces
- Delivers > 100 lumen/watt efficiency
- Long life of 15,000 hrs
- Modern design; Low glare and no flicker
- High performance Diffuser for uniform lighting
- Resistant to yellowing and chipping
- High voltage protection
- Easy installation clips for user-friendly installation

HSN Code: 94051090

MRP: ₹799



SlimLine Advance

25W: 2500 lm

(Available in CDL, WW, NW)

Specifications:

- Positioned as "The Study Room Specialist"
- Exclusively designed for study rooms and personal workspaces at home
- Delivers 25% more brightness than standard 4 ft 20W LED battens
- Robust aluminum construction for better heat dissipation and longer life
- Case size: 20 pcs
- Dedicated earthing provision and cable included in box for user safety

HSN Code: 94051090

MRP: ₹1099



SlimLine Advance

30W: 3000 lm

(Available in CDL, WW, NW)

Specifications:

- Positioned as "The Living Room Specialist"
- Exclusively designed for living rooms and larger bedrooms/study rooms
- Delivers 50% more brightness than standard 4 ft 20W LED battens
- Robust aluminum construction for better heat dissipation and longer life
- Dedicated earthing provision and cable included in box for user safety

HSN Code: 94051090

MRP: ₹1299





SlimLine Advance

36W: 3600 lm
(Available in CDL, WW, NW)

Specifications:

- Exclusively designed for large living rooms and large spaces/bedrooms at home
- Delivers double the brightness than standard 18W: 1800 lm LED Battens
- Unique new design for better aesthetic appeal
- Robust aluminum construction for better heat dissipation and longer life
- Dedicated earthing provision and cable included in box for user safety

HSN Code: 94051090

MRP: ₹1599

SlimLine Compact

20W: 2000 lm (length 554 mm)

Specifications:

- Exclusively designed for kitchens and compact rooms/spaces
 - Delivers brightness of a standard 4 ft batten in a 2 ft form factor
 - Robust aluminum construction for better heat dissipation and longer life
 - Available colors-6500K (CDL)
- Case size: 20 pcs

HSN Code: 94051090

MRP: ₹800



SlimLine NEXT

20W: 1900 lm
(Available in CDL, WW, NW)

- Modern design, low glare and no flicker
- High performance diffuser for uniform lighting
- Resistant to yellowing and chipping
- High voltage protection
- Easy installation clips for user-friendly installation
- Pack size: 20 pcs

HSN Code: 94051090

MRP: ₹599



AstraLine

20W: 2000 lm, 9W: 900 lm, 5W: 450 lm
(Available in CDL, WW, NW)

Specifications:

- Bright LED light source with uniform light output
- Surge protection of 2 kV with wide voltage protection 160-360 V
- Case size: 20 pcs

HSN Code: 94051090

MRP: ₹4 ft: ₹600, ₹2 ft: ₹400, ₹1 ft: ₹350



AstraLine Plus

24W: 2500 lm
(Available in CDL, WW, NW)

Specifications:

- Bright LED light source with uniform light output
- Surge protection of 2 kV with wide voltage protection 160-360 V
- Case Size: 20 pcs

HSN Code: 94051090

MRP: ₹799

Inverter Batten

20W: 2000 lm in AC mode

Specifications:

- Backup time up to 4 hrs
- Lithium-ion battery for longer life
- Short circuit protection and surge protection up to 2.5 kV

HSN Code: 94051090

MRP: ₹1499





Sensor Batten

20W: 2000 lm

Specifications:

- Power-saving LED lighting
- Smart motion and ambient light sensor

HSN Code: 94051090

MRP: ₹1099

Tarang Slek and Tarang Electronic

36W: 2650 lm, 36W: 2450 lm

Specifications:

- Elegant slim design
- Robust metal body
- Wide voltage protection (140-270 V) and highest surge protection of 2 kV in the category
- Case size: 30 pcs and 16 pcs

HSN Code: 940510

MRP: ₹380, ₹400



StellarBright TLED

25W (StellarBright TLED
6500K with batten)

Specifications:

- 25W: 2500 lm
- 15,000 hours life
- Ideal replacement of conventional batten and tube

HSN Code: 85395000

MRP: ₹599



StellarBright TLED

20W (StellarBright
TLED 6500K tube)

Specifications:

- 25W: 2100 lm
- 15,000 hours life
- Ideal replacement of conventional batten and tube

HSN Code: 85395000

MRP: ₹350



PHILIPS
StellarBright





Styles that complete your home

Philips LED Luminaires



The variable, flexible lighting designs that can be adapted to the changing style and use of a space, reveal the architectural appeal of your establishment in an interplay of light and shadow. Perfect for high quality general lighting with excellent visual comfort, these lighting solutions are hardly noticed as an additional element of design, being fully integrated into the architecture which add an oomph factor to your place.

LED Luminaires

The new shape of style

Philips **HexaStyle Downlights**



New hexagonal
design



Create
unique patterns



Easy
installation



Fits regular
round cut-out





Available in

8W 12W 15W



Warm White



Natural White



Cool White


EyeComfort
Technology™
No Blue Light Hazard



HexaStyle

8W, 12W, 15W

(Available in WW, NE, CW)

Reimagine your world with Philips HexaStyle downlights, which have a unique hexagonal shape with a round fitment for easy installation. These downlights give you the freedom to embrace your creativity by arranging them in any pattern and configuration, and design your space your way!



Specifications:

- New hexagonal design
- Create unique patterns
- Fits regular round cut-out

HSN Code: 94051090



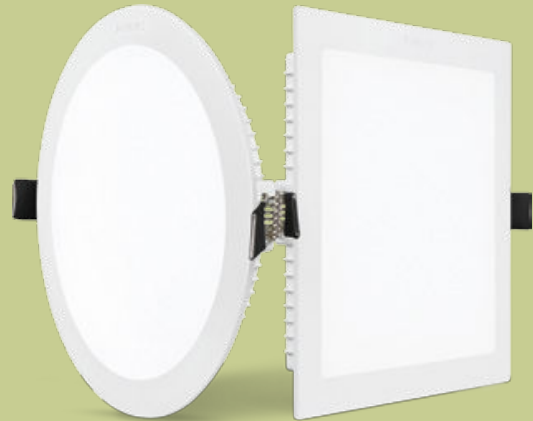
PrimePlus UltraGlow

Bright downlights, solid performance
5W, 10W, 12W, 15W, 22W

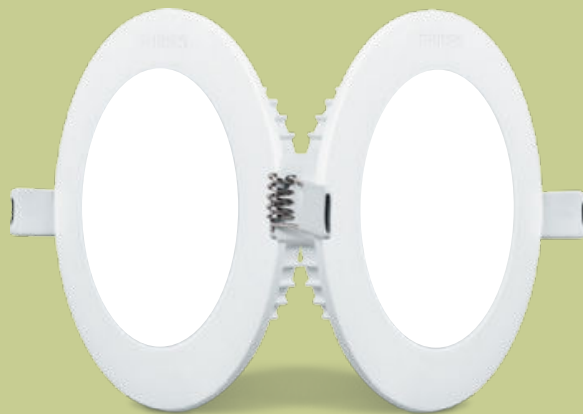
| Wattage | Lumens | Colors | Shape | Cutout (mm) |
|--------------|--------|----------|------------------------------|-------------|
| 5W (R) | 500 | CW/NW/WW | R (Junction Box fitting), Sq | 75 mm |
| 10W (R & Sq) | 1000 | CW/NW/WW | R, Sq | 110 mm |
| 12W (R & Sq) | 1200 | CW/NW/WW | R, Sq | 130 mm |
| 15W (R & Sq) | 1500 | CW/NW/WW | R, Sq | 152.4 mm |
| 22W (R & Sq) | 2200 | CW/NW/WW | R, Sq | 188 mm |

Specifications:

- Brightest synthetic DL; light output of 100 lm/Watt
- Superior light quality: Even and comfortable light with no dark spots
- Longer life: 25,000 hrs. long life
- Superior matt finish with polycarbonate housing
- Anti-glare diffuser delivers superior eye comfort



HSN Code: 94051090



HSN Code: 94051090

5W PrimePlus UltraGlow

Now in red, blue, green and pink
Fits perfectly in 3" junction box

| Wattage | Cutout (mm) | Pack size (pcs) | Color | Shape |
|---------|-------------|-----------------|--------------------------|------------------------------|
| 5W | 75 | 24 | Red, green blue, pink | R (Junction box fitting), sq |

Specifications:

- Brighter at 75 lumens/watt
- Eye Comfort Technology: designed for low glare, reduced flicker and no blue light hazard
- Wide voltage protection (160-360 V)
- Surge protection up to 2.5 kV

Astra Metallica

100 lm/watt

| Wattage | Cutout (mm) | Pack size (pcs) | Color | Shape |
|---------|----------------------------------|-----------------|------------|------------------------------|
| 5W | 80 mm (JB)/110 mm (Non JB) | 12 | WW, NW, CW | R (Junction box fitting), sq |
| 10W | 136 mm | 12 | WW, NW, CW | R, Sq |
| 15W | 159 mm | 12 | WW, NW, CW | R, Sq |
| 18W | 178 mm | 12 | WW, NW, CW | R, Sq |

Specifications:

- Premium aluminum material for endurance
- Life class: 25,000 burning hours
- Surge protection of 2 kV/BIS certified
- Wide voltage protection (160 V-360 V)
- Junction box fitting available: 5W



HSN Code: 94051090

Ujjwal Downlight

5W, 10W, 15W, 22W

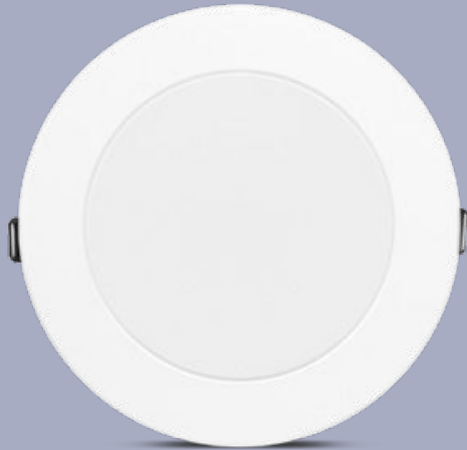
| Wattage | Lumens | Colors | Shape | Cutout (mm) |
|--------------|--------|----------|------------------------------|-------------|
| 5W | 350 | CW/NW/WW | R (Junction Box fitting), Sq | 75 mm |
| 10W | 700 | CW/NW/WW | R, Sq | 110 mm |
| 15W (R & Sq) | 1050 | CW/NW/WW | R, Sq | 140 mm |
| 22W (R & Sq) | 1540 | CW/NW/WW | R, Sq | 188 mm |

Specifications:

- 5W - Fits into junction box
- Superior matt finish with polycarbonate housing
- Even and comfortable light with no dark spots
- Efficacy of 60 lm/Watt
- Anti-glare diffuser delivers superior eye comfort
- No visible flickering, no UV/IR
- 1 Year Warranty



HSN Code: 94051090



HSN Code: 94051090

StarFit

Downlight that doesn't require false ceiling
5W, 7W, 10W

Specifications:

- Fits perfectly into a concrete ceiling with a 3" junction box, or false ceiling
- Superior matt finish with polycarbonate housing
- Even and comfortable light with no dark spots
- Efficacy of 70 lm/Watt
- Anti-glare diffuser delivers superior eye comfort
- No visible flickering, no UV/IR
- 5W available in different colors

| Wattage | Lumens | Colors | Shape | Cutout (mm) |
|---------|--------|----------------------|-------|-------------|
| 5W | 300 | CW/NW/WW/ R/G/B/P | R | 80 mm |
| 7W | 490 | CW/NW/WW | R | 80mm |
| 10W | 700 | CW/NW/WW | R | 80 mm |

3W StarFit

Junction box 2" downlight

FITS PERFECTLY
In 2" junction box

| Wattage | Cutout (mm) | Pack size (pcs) | Color | Shape |
|---------|-------------|-----------------|------------------------|--------------------------|
| 3W | 43 | 30 | WW, NW, CW | R (Junction box fitting) |
| 3W | 43 | 30 | Red, Green, Blue, Pink | R (Junction box fitting) |



Specifications:

- Fits perfectly in a 2 inch small junction box
- Matt diffuser
- Wide voltage protection (160-360 V)
- Surge protection up to 2 kV

HSN Code: 94051090





TrueFit

8W, 15W

Downlight for 2 inch deep junction box

| Wattage | Lumens | Color | Shape | Cutout |
|---------|--------|----------|-------|--------|
| 8W | 720 | CW/NW/WW | R | 45 mm |
| 15W | 1350 | CW/NW/WW | R | 45 mm |

Specifications:

- Fits perfectly into a concrete ceiling in a 2" deep junction box
- Extra bright light of 90 lm/Watt
- Even and comfortable light with no dark spots
- Anti-glare diffuser delivers superior eye comfort

HSN Code: 94051090

Star Surface

Low profile surface-mount ceiling lights

| Wattage | Dimension (mm) | Pack size (pcs) | Lumen | Shape | Color |
|---------|----------------|-----------------|-------|-------|------------|
| 7W | 146x146x25 | 12 | 600 | R, Sq | WW, NW, CW |
| 12W | 178x178x25 | 12 | 900 | R, Sq | WW, NW, CW |
| 18W | 234x134x25 | 12 | 1450 | R, Sq | WW, NW, CW |
| 22W | 300x300x25 | 12 | 1700 | R, Sq | WW, NW, CW |

Specifications:

- Slim, sleek profile: 25 mm thickness
- Low glare to prevent eye strain
- Surge protection of 2 kV/BIS certified
- Wide voltage protection (160 V-360 V)
- 22W: Large format, size: 1 ft x 1 ft

HSN Code: 94051090

22W: LARGE FORMAT

1 X 1 size



HSN Code: 94051090

FullGlow

6W, 12W, 18W, 24W

| Wattage | Lumens | Colors | Shape | Dimension |
|---------|--------|----------|-------|-------------|
| 6W | 600 | CW/NW/WW | R, Sq | 102 X 29 mm |
| 12W | 1200 | CW/NW/WW | R, Sq | 145 X 29 mm |
| 18W | 1800 | CW/NW/WW | R, Sq | 200 X 29 mm |
| 24W | 2400 | CW/NW/WW | R, Sq | 200 X 29 mm |

Specifications:

- Brightest synthetic surface light with 100 lm/Watt in both round and square shape
- FullGlow diffuser: wider lightspread of 270 degree
- Robust rimless design
- Super slim design with only 29 mm height; Doesn't protrude from the ceiling
- Modularity in mounting bracket, can be mounted on surface as well as junction boxes

AstraSpot COB Series

Focused spotlights

| Wattage | Cutout (mm) | Pack size (pcs) | Color | Shape |
|---------|-------------|-----------------|------------|-------|
| 7W | 77 | 12 | WW, NW, CW | R |
| 12W | 92 | 12 | WW, NW, CW | R |
| 20W | 110 | 12 | WW, NW | R |

Specifications:

- Strong focused beam (36° beam)
- Adjustable/tiltable head (25°)
- Metal heat sink for durable performance
- Long life LEDs for durable performance

HSN Code: 94051090



AstraSpot 2W

2W Focused spotlight

| Wattage | Cutout (mm) | Pack size (pcs) | Color | Shape |
|---------|-------------|-----------------|------------|-------|
| 5W | 35 | 48 | WW, NW, CW | R |

Specifications:

- Strong focused beam (36° beam)
- White synthetic housing
- Long life LEDs for durable performance

AstraSpot 2W Color

R, G, B 2W focused spotlight

| Wattage | Cut out (mm) | Pack size (pcs) | Color | Shape |
|---------|--------------|-----------------|------------|-------|
| 2W | 35 | 48 | WW, NW, CW | R |

Specifications:

- Strong focused beam (36° beam)
- White synthetic housing
- Long life LEDs for durable performance

HSN Code: 94051090





AstraSpot COB 3W

Focused spotlight

| Wattage | Cut out (mm) | Pack size (pcs) | Color | Shape |
|---------|--------------|-----------------|------------|-------|
| 3W | 52 | 30 | WW, NW, CW | R |

Specifications:

- Strong focused beam (36° beam)
- White metal housing
- Metal heat sink for durable performance

HSN Code: 94051090

AstraSpot COB 3W Tilt

Adjustable focused spotlight (tilt option)

| Wattage | Cut out (mm) | Pack size (pcs) | Color | Shape |
|---------|--------------|-----------------|------------|-------|
| 3W Tilt | 64 | 30 | WW, NW, CW | R |

Specifications:

- Strong focused beam (36° beam)
- Tilt angle of 25°
- Metal heat sink for durable performance

HSN Code: 94051090



Slim Star: Tilttable spot

3W, 5W

| Wattage | Lumens | Color | Shape | Cutout |
|---------|--------|----------|-------|--------|
| 3W | 270 Lm | CW/NW/WW | R | 63 mm |
| 5W | 450 Lm | CW/NW/WW | R | 73 mm |

Specifications:

- Tilttable spotlight
- 60° degree beam angle
- Bright light with 90 lm/Watt
- 15,000 hrs life
- Focused light output to enhance your décor
- Wide voltage and surge protection

HSN Code: 94051090

Marathon Ultra

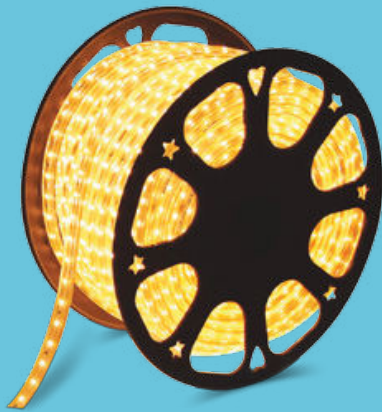
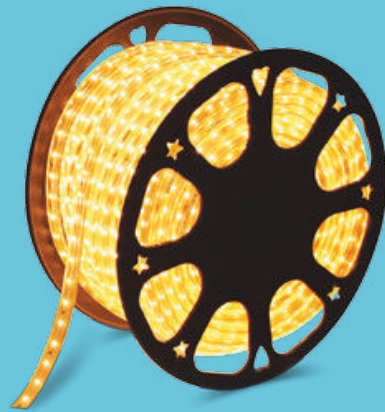
Brightest LED rope light

| Wattage | Lumens/meter | Color | Shape | Length |
|---------|--------------|-----------------|---------------|--------|
| 8W/mtr | 700 | WW/CDL/ Blue | Rope Light | 50 mtr |

Specifications:

- 700 lumens/meter*
- 120 LEDs/m for best light output and uniform light effect
- 8W per mtr
- IP65- withstands harsh weather conditions
- 50 mtr Roll for continuous use,
Can be cut at every meter

HSN Code: 94051090



Marathon Rope Light

400 lumens/meter*

| Wattage | Lumens/meter | Length (per pc) | Shape | Length |
|---------|--------------|--------------------|--------------------------|---------------------------|
| 6W/mtr | 400 | WW/CDL/ R/G/B/P | Rope Light Rope Light | 50 mtr (Marathon) |
| 6W/mtr | 400 | WW/CDL/ R/G/B/P | | 20 mtr (Mini Marathon) |

Specifications:

- 72 LEDs/m light output and uniform light effect
- 6W per mtr
- IP65- withstands harsh weather conditions
- 50 mtr/20 mtr roll for continuous use,
Can be cut at every meter

HSN Code: 94051090

Cove Glow

LED strip without driver

| Wattage | Lumens/meter | Length (per pc) | Pack size (pcs) | Color | No. of LED per meter |
|---------|--------------|--------------------------|-----------------|-------------------------------------------------------------------|----------------------|
| 24W | 360 | 5 m without driver | 20 | CW, NW, WW, R, G, B, Magenta, Lemon Yellow, Aqua Blue | 60 |

Specifications:

- Uniform light spread for perfect ambience
- Superior adhesive for easy installation
- 1800 lm for 5m

HSN Code: 94051090

NEW
Now with
60 LEDs
per Meter





HSN Code: 94051090

ColorMagic LED Strip

3W, 5W

| Wattage | Lumens | Color | Shape | Cutout |
|---------|--------|----------|-------------|--------|
| 25W | 460 | WW+Blue | Strip Light | 5 mtr |
| 25W | 460 | NW +Blue | Strip Light | 5 mtr |

Specifications:

- 5 meter with driver LED Strip especially designed for cove lighting.
- 2in1 Strip – 2 colors in 1 strip.
- Innovative concept helps in changing the ambience just by a toggle of the wall switch; choose between WW or Blue /NW or Blue by using the same strip.
- Uniform brightness with 460 lumens/meter*
- Superior 3M adhesive for easy and worry-free installation





Make yourself feel at home

Philips Home Lighting range

A perfect luminaire can help light up every room. From wall lamps to desk lights, LED home lights provide the perfect light for your space. These lighting fixtures enhance the look of your home and add unique lighting mood. Philips makes sure that you feel at home as soon as the lights are switched on, you just need to choose a light that perfectly fits with the atmosphere of your living space.

Home



EyeComfort
Technology[#]

No Blue Light Hazard

Comet

Max 23W CFL

Specifications:

- Aesthetic design
- Designed for energy saving lamps
- Premium material and glossy finish

HSN Code: 94051900

MRP: ₹450



Nova

7W, 400 lumen, Cool White

Specifications:

- Contemporary design
- Long life Philips LED driver included
- No harmful UV/IR radiation

HSN Code: 94051100

MRP: ₹450

Sigma

Max 23W

Specifications:

- Aesthetic design
- Designed for energy saving lamps
- Mounting permits light upwards and downwards
- Premium material and finish

HSN Code: 94051900

MRP: ₹450





Uno

Max 23W

Specifications:

- Unique aesthetics
- Designed for energy saving lamps
- Premium material and glossy finish
- Ideal for living room, study room, bedroom

HSN Code: 94051900

MRP: ₹350

Coral Slim LED Wall Light

10W, 500 lumen

Specifications:

- Vibrant light pattern
- Long life LED light source
- Slim design, no harmful UV/IR radiation
- Anti-glare diffuser
- Available in Cool White and Warm White variants

HSN Code: 94051100

MRP: ₹1200



Ultron

17W, 1350 lumen

Specifications:

- Sleek construction
- Slim, modern design
- Premium material and finish
- Anti-glare diffuser
- No harmful UV/IR radiation
- Available in Cool White and Warm White variants

HSN Code: 94051100

MRP: ₹1600

Ultron Scene Switch

22W, 2400 lumen

Specifications:

- Tunable White (WW, NW and CW)
- Sleek construction
- Slim, modern design
- Premium material and finish
- Anti-glare diffuser
- No harmful UV/IR radiation

HSN Code: 94051100

MRP: ₹2100



Orbit Desk Light

5W, 400 lumen

Specifications:

- Rechargeable LED desk light
- 3-in-1 Scene Switch (WW, NW and CW)
- One-touch for brightness control and CCT change
- Sleek design, easy to adjust height and direction
- Charging time 3 hours; Backup time 2.5 hours
- Ideal for use in study and office

HSN Code: 94052100

MRP: ₹1900

Skyy Desk Light

5W, 400 lumen, Cool White

Specifications:

- Rechargeable LED desk light
- Works on touch control with continuous dimming feature
- Sleek design, easy to adjust height and direction
- Ideal for use in study and office
- Premium classy matt finish
- Charging time 4 hours; Backup time 3.5 hours

HSN Code: 94052100

MRP: ₹2050





Cosmos Desk Light

5W, 550 lumen, Cool White

Specifications:

- Rechargeable LED desk light
- Works on touch control with continuous dimming feature
- Fast-charging feature (2.5 hours charging for a backup of 3.5 hours)
- Modern, sleek look with utility holder
- Adjustable height and direction

HSN Code: 94052100

MRP: ₹2500

Novus Desk Light

5W, 450 lumen, Cool White

Specifications:

- Flexible & foldable design - Allows 360° flexibility
- Even light distribution
- Short-circuit and thermal protection
- Wide voltage protection 160V-360V
- Available in Black and White colors

HSN Code: 94052100

MRP: ₹1499



Air Desk Light

5W, 250 lumen, Cool White

Specification:

- No visible flickering, no UV/IR
- Low glare to prevent eye strain
- CRI > 80
- Flexible gooseneck
- Optimal heat management to prevent damage to LED light

HSN Code: 94052100

MRP: ₹1450



Breeze Desk Light

5W, 250 lumen, Cool White

Specifications:

- No visible flickering, no UV/IR
- Low glare to prevent eye strain
- CRI > 80
- Flexible gooseneck
- Optimal heat management to prevent damage to LED light

HSN Code: 94052100

MRP: ₹1450



Ujjwal Plus

Rechargeable Emergency Light
32 LEDs, 250 lumen

Specifications:

- Long life lithium-ion battery
- 360 degree bright light and plated reflector
- Charging time: 10 hours, Backup time: 4 hours
- Compact design with cable and plug included
- Overcharge and deep discharge protection
- Color: Dark Blue

HSN Code: 94054100

MRP: ₹1250

Ujjwal Mini

Rechargeable Emergency Light
4W, 16 LEDs, 100 lumen

Specifications:

- Long life lithium-ion battery
- 360 degree bright light and plated reflector
- Charging time: 4 hours, Backup time: 4 hours
- Compact design with cable and plug included
- Overcharge and deep discharge protection
- Color: Dark Blue

HSN Code: 94054100

MRP: ₹1250





Ojas

6W Rechargeable LED Lantern

Specifications:

- Overcharge and deep discharge protection
- Lithium-ion battery of 2000 mAh
- Charging time: 8 hours; Backup time: 4 hours
- Auto ON in case of darkness
- Un-flickering light

HSN Code: 94054100

MRP: ₹2100

Ojas Mini

3W Rechargeable LED Lantern
(18 LEDs, 100 lumen)

Specifications:

- Overcharge and deep discharge protection
- Lithium-ion battery of 1300 mAh
- Charging time: 4 hours; Backup time: 4 hours
- Auto ON in case of darkness
- Un-flickering light

HSN Code: 94054100

MRP: ₹1490



SlimRay (60 LEDs)

Rechargeable Emergency Light
4W, 300 lumen

Specifications:

- Power ON indicator; charging indicator
- Charging time: 12 hours; Backup time: 5-10 hours
- Auto ON feature, Easy mounting
- Overcharge & deep discharge protection
- Wide beam and plated reflector ensures larger illumination area

HSN Code: 94054100

MRP: ₹2550

SlimRay (30 LEDs)

Rechargeable Emergency Light
2W, 160 lumen

Specifications:

- Power ON indicator; charging indicator
- Charging time: 7 hours; Backup time: 4-9 hours
- Auto ON feature, Easy mounting
- Overcharge & deep discharge protection
- Wide beam and plated reflector ensures larger illumination area

HSN Code: 94051100

MRP: ₹1800



Blaze Emergency Light

15W, 20 LEDs

Specifications:

- Bright un-flickering light
- Multiple lighting ways – 5 light modes
- Charging time: 5 hours, Backup time: 4 hours
- Auto ON, Overcharge & deep discharge protection
- Charging indicator
- Front: 15W, 400 lumen; Side: 2W, 220 lumen

HSN Code: 94054100

MRP: ₹2200

Blaze Neo Emergency Light

7W

Specifications:

- Bright un-flickering light
- Multiple lighting ways – 2 light modes
- Charging time: 6 hours, Backup time: 3-5 hours
- Auto ON, Overcharge & deep discharge protection
- Charging indicator

HSN Code: 94054100

MRP: ₹2000





Siria

5W, 250 lumen Rechargeable LED Lantern

Specifications:

- Overcharge & deep discharge protection
- With charging indicator
- High quality rechargeable battery – 3.7 V lithium-ion battery (2200 mAh)
- Works on touch control
- Dimming regulator to control brightness level
- Charging time: 8 hours, Backup time: 2.5 – 4 hours
- Colors available: Yellow and Grey

HSN Code: 94054100

MRP: ₹2299

Tesni

5W, 250 lumen Rechargeable LED Lantern

Specifications:

- Overcharge & deep discharge protection
- With charging indicator
- High quality rechargeable battery – 3.7 V lithium-ion battery (2200 mAh)
- 360-degree lighting
- Dimming regulator to control brightness level
- Charging time: 8 hours
- Backup time (Dim light): 15 hours
- Backup time (Bright light): 2.5 hours

HSN Code: 94054100

MRP: ₹2299



Helio

5W, 250 lumen Rechargeable LED Lantern

Specifications:

- Overcharge & deep discharge protection
- With charging indicator
- 3 Light Modes – Headlight, Dim Light and Strong Light
- High quality rechargeable battery – 3.7 V lithium-ion battery (2200 mAh)
- Handheld portable design
- Charging time: 8 hours; Backup time: 2.5 – 8 hours
- Colors available: Red and Grey

HSN Code: 94054100

MRP: ₹1999

Cyra

5W, 250 lumen Rechargeable
LED Lantern

Specifications:

- Overcharge & deep discharge protection
- With charging indicator
- 360-degree lighting
- High quality rechargeable battery – 3.7 V lithium-ion battery (2200 mAh)
- Charging time: 8 hours; Backup time: 2.5 – 8 hours
- Comes with unbreakable handle
- Colors available: Yellow and Grey

HSN Code: 94054100

MRP: ₹2099





Brighten up your home

Philips CFL and GLS

With comfortable, soft light for an inviting atmosphere, CFL and GLS bulbs from Philips provide high-performance, energy saving and long-lasting light. These bulbs are the most sold energy saving lamps, which combine the energy of fluorescent lighting with the convenience and popularity of incandescent fixtures.





CFL and GLS



EyeComfort
Technology[#]

No Blue Light Hazard

Standard Incadescent

25W, 40W, 60W, 100W, 200W



Combining the energy efficiency of fluorescent lighting with the convenience and light quality of incandescent bulbs, CFLs work best and have the most efficiency in areas where lights are on for long periods. These bulbs are perfect for task lighting when a need for extra brightness arises. CFLs work best and have the most efficiency in areas where lights are on for long periods.

Specifications:

- Case size: 25W/40W/60W/
100W: 100 pcs, 200W: 50 pcs
HSN Code: 85392910
MRP: 25W / 40W: ₹18
60W / 100W: ₹20
200W: ₹40

Softone

40W, 60W, 100W

Specifications:

- Softer, frosted glow
- Case size: 100 pcs
HSN Code: 85392910
MRP: ₹30, ₹30, ₹30



Essential CFLi

8W: 415 lm, 18W: 1010 lm

Specifications:

- Available in BC22
- Available in CDL

| 12NC | Description | MRP (₹) |
|--------------|--------------------------------------------|---------|
| 929689640209 | Essential HPF NG Slim 8W CDL B22 1CT/12 | 155 |
| 929689640818 | Essential HPF SLK NG 18W CDL B22 1CT/12 | 215 |



Lustre Lamp

40W (E14, E27, B22)

Specifications:

- Lamp type: Spiral
- Available in: ES
- Available in: CDL
- Case size: 100 pcs

HSN Code: 85392910

MRP: Clear: ₹40

Soft White: ₹40

Infrared Lamp

250W, 375W

Specifications:

- Lumen output becomes upto 50% when on battery mode
- Case size: 10 pcs

MRP: ₹600, ₹650





Candle

25W, 40W B22
40W E14

Specifications:

- 25W Clear E27
- 25W Pearl Candle
- Case size: 50 pcs

HSN Code: 85392910

MRP: ₹40, ₹40

Decoration Colored Lamp

10W (Frosted), 15W (Clear, Red, Green, Yellow, Blue and Orange)

Specifications:

- Colored decoration lamp
- Applications: Festive lighting, pooja room, night lamp
- 10W Case size: 100 pcs
- 15W Case size: 20X12

HSN Code: 85392910

MRP: ₹20



Double-ended Halogen

500W and 1000W

Specifications:

- Case size: 50 pcs

HSN Code: 85392110

MRP: ₹120, ₹140





CFL-NI PL-C Lamps

10W, 13W, 18W, 26W

Specifications:

- 6500K
- Available in 2 pin and 4 pin

Model Number: PL-C

HSN Code: 85393110

MRP: ₹250

CFL-NI PL-L Lamps

18W, 36W

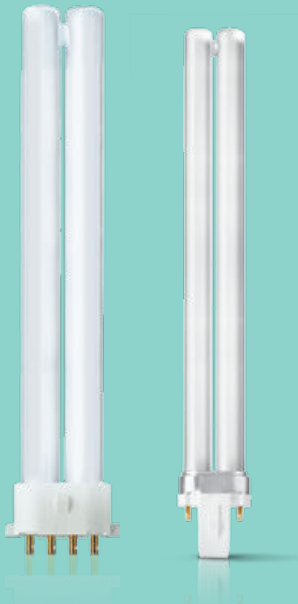
Specifications:

- Available in 2 pin and 4 pin
- 2 color temperatures: 2700K and 6500K
- Only available in CDL temperature

Model Number: PL-L

HSN Code: 85393110

MRP: ₹250, ₹250



CFL-NI PL-S Lamps

9W, 11W

Specifications:

- Available in 2 pin and 4 pin
- 2 color temperatures: 2700K and 6500K

Model Number: PL-S

HSN Code: 85393110

MRP: ₹250



Illuminating your life

Philips TL

Engineered to brighten up your interiors, these sleek, compact lights are high performance lighting solutions and good lighting options. With the best lumen output to offer, these are a great way to brighten and illuminate any space within seconds.

TL



T8 Lifemax

Industrial 18W and 36W available for bulk supplies



Offering long life and quality, this tubelight is apt for energy efficient task lighting and fits almost any lighting need. Philips innovation has reduced the mercury level without sacrificing life or performance, enhancing the safety for the lighting solution.

Specifications:

- Lumen: 1015 lm/2450 lm
- Life: 15,000 hours
- Case size: 18W: 25 pcs, 36W: 36 pcs

HSN Code: 85393190

MRP: ₹55, ₹60

T5 Essential

14W

Specifications:

- Lumen: 1220 lm/2600 lm
- Life: 15,000 hours
- 830/840/865 colors available
- Case size: 40 pcs

HSN Code: 85393190

MRP: ₹120



T8 Lifemax Plus

36W

Specifications:

- Lumen: 2650 lm
- Life: 21,000 hours
- Case size: 36 pcs

HSN Code: 85393190

MRP: ₹60



T12 Champion 3-in-1

20W and 40W

Specifications:

- Lumen: 940 lm/2450 lm
- Life: 15,000 hours
- Case size: 30 pcs

HSN Code: 85393190

MRP: ₹60



T8 Champion Maxbright

36W with twin glow technology

Specifications:

- 15,000 hours
- Case size: 36 pcs

HSN Code: 85393190

MRP: ₹70



T8 Superbright

36W

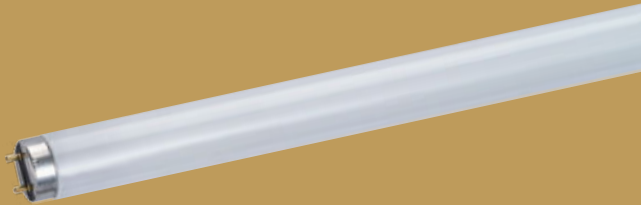
Specifications:

- Lumen: 3200 lm
- Life: 20,000 hours
- Available in color 865
- Case size: 36 pcs
- CRI>80



HSN Code: 85393190

MRP: ₹80



Starter S2, S10

Specifications:

- Designed for 36W and 40W tubelight

| 12NC | Description | MRP (₹) | Pack size |
|--------------|------------------------------------------|---------|-----------|
| 928390710105 | S2 4-22W SER 220-240V WH 12X25 IND | 45 | 300 |
| 928390710105 | S10 TLD STARTER MAKE-A-LITE | 15 | 1152 |





Switch to elegance

Philips Modular Switches



TripleProtection[®]
Technology



DualShutter[®]
Technology



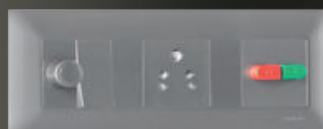
**Innovative Front Removal
& Insertion Technology**



ECO-friendly[®]
Technology



Smart Range



Metallica

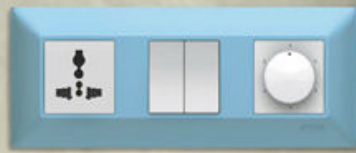


Mirror Glaze



Smart+

Glam up your interiors with the impressive range of Philips Modular Switches and make your world even more stylish and sustainable. Made with cutting-edge innovative technology, these switches impress with both, form and function. Making a statement, these tough and durable switches are sure to add a personality to your home.



Modular Switches



TripleProtection[®]
Technology



DualShutter[®]
Technology



**Innovative Front Removal
& Insertion** Technology

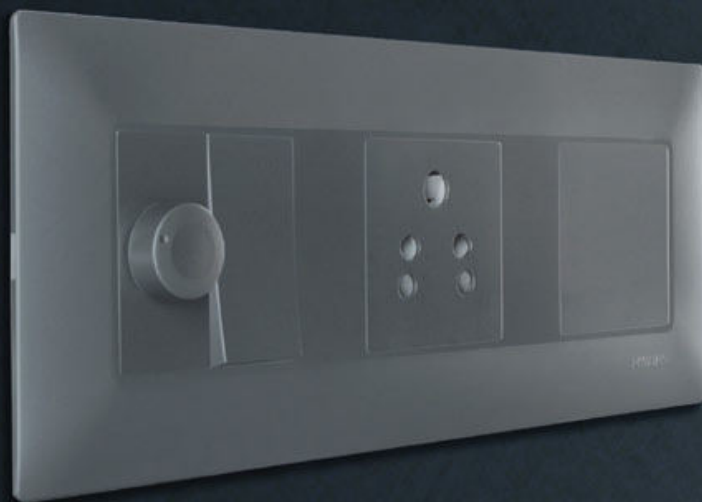


ECO-friendly[®]
Technology

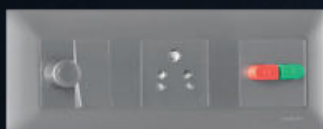


Switch to premium living

Philips Modular Switches



Smart Range



Metallica



Mirror Glaze



Smart⁺



TripleProtection[®]
Technology



DualShutter[®]
Technology



**Innovative Front Removal
& Insertion Technology**



ECO-friendly[®]
Technology



Mirror Glaze

Specifications:

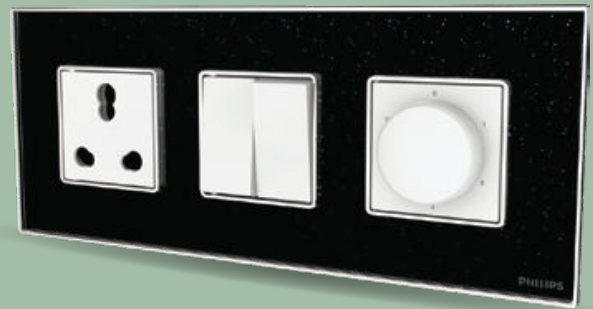
- Multiple color/sparkle options for superior look
- Light weight/ultra-durability
- Easy to clean
- Great strength due to honeycomb ribs construction

Generic Name : Grid & Cover - 6M Mirror Glaze Black

12NC: 913713947301

MRP: ₹1657

HSN Code: 85365020



Smart+

Specifications:

- Blend of glossy and matt finish makes it premium
- Light weight/ultra-durability
- Great strength due to honeycomb ribs construction

Generic Name : Switch 1M-1W 10AX Smart+ Matt Black

12NC: 913713638801

MRP: ₹138

Generic Name : Grid & Cover-4M Smart+ Matt Black

12NC: 913713642501

MRP: ₹1280

HSN Code : 85365020

Smart

Grid and Cover

Specifications:

- Premium glossy finish - easy to clean
- Triple protection technology
- Great strength due to honeycomb ribs construction

Generic Name : Switch 1M-1W 10AX Smart-White

12NC: 913713911049

MRP: ₹135

Generic Name : Grid & Cover-6M Smart-White

12NC: 913713914849

MRP: ₹282

HSN Code : 85365020



DurroEco Range

Specifications:

- Brass terminals and contacts for longer life
- Triple protection technology
- Better locking mechanism
- Shrouded terminals with captive screws
- Softer sound with premium feel

Generic Name : Switch 1M 1Way 10AX DurroEco

12NC : 913715134701

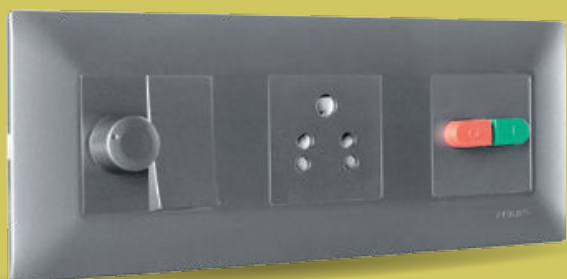
MRP : ₹49

Generic Name : Grid & Cover-6M DurroEco

12NC : 913715137601

MRP : ₹197

HSN Code : 85365020



Metallica

Specifications:

- Premium metallic color to enhance decor
- Dual shutter and triple protection technology
- Innovative front removal and insertion technology

Generic Name : Switch 1M 1Way 10AX Metallica

12NC : 913713969801

MRP : ₹142

Generic Name : Grid & Cover-6M Metallica

12NC : 913713972701

MRP : ₹475

HSN Code : 85365020

Smart⁺







Tough and sturdy accessories

Designed and developed to meet the needs of safety at residences and commercial installations, the made-to-last lighting accessories and tipper products from Philips help ensure protection against overload, short circuit and leakage current along with dedicated enclosures.

The comprehensive range offers reliable, robust and user-friendly modular devices that make your home and workplace safer to live and operate.

Lighting Accessories



ROHS
compliant



High standards
of safety



Energy efficient



Elegant design

Sturdy and durable accessories for your home

A comprehensive range of Lighting Accessories, **MCBs**, **RCCBs** and **Distribution Boxes** designed to keep your appliances safe as well as add to the decor.



ROHS
compliant



High standards
of safety



Energy efficient



Elegant design



Smart Harmony Musical Doorbell

Specifications:

- Aesthetically beautiful design
- High sound output
- Power efficient
- Available in two colors
- Voltage : 3V, 2 battery (1.5V), AA

| 12NC | Generic Name | MRP (₹) |
|--------------|---------------------------------------|---------|
| 913713825601 | Smart Harmony Musical Doorbell - Grey | 326 |
| 913713833101 | Smart Harmony Musical Doorbell - Cyan | 326 |

HSN Code: 85365020

Smart Buzz Doorbell

Specifications:

- Crisp and loud pleasurable sound
- Premium glossy finish
- Easy to install
- Durable sleek design
- Carbon tip for crisp audible sound
- Low power consumption
- Available in two colors
- Voltage : 240V ac/~, 50Hz.

| 12NC | Generic Name | MRP (₹) |
|--------------|--------------------------------------|---------|
| 913713818701 | Smart Buzz Ding Dong Doorbell - Blue | 286 |
| 913713818801 | Smart Buzz Ding Dong Doorbell - Grey | 286 |



Modular Lamp Holder

Specifications:

- Fire retardant
- Available in white and grey colors
- Lamp Holder – PBT glass filled
- Pins & terminal - brass
- Captive screw
- Shrouded terminals
- Voltage : 240V AC/~, 50Hz.

| 12NC | Generic Name | MRP (₹) |
|--------------|------------------------------------------|---------|
| 913713859001 | Modular Lamp Holder B22 Straight - Grey | 110 |
| 913713859101 | Modular Lamp Holder B22 Angular - Grey | 113 |
| 913713859201 | Modular Lamp Holder B22 Straight - White | 110 |
| 913713859301 | Modular Lamp Holder B22 Angular - White | 113 |

HSN Code: 85366110



Deco Lamp Holder

Specifications:

- Available in blue, pink and white colors
- Superior shape with straight and angular configuration
- Captive screw
- Lamp Holder – PBT glass filled
- Eclipse mounting holes for easy installation
- Ring gripper
- Shrouded terminals

| 12NC | Generic Name | MRP (₹) |
|--------------|-------------------------------------|---------|
| 913713900101 | Deco Lamp Holder Angular B22 White | 66 |
| 913713699901 | Deco Lamp Holder Straight B22 White | 66 |
| 913713900301 | Deco Lamp Holder Angular B22 Blue | 69 |
| 913713900201 | Deco Lamp Holder Straight B22 Blue | 69 |
| 913713900501 | Deco Lamp Holder Angular B22 Pink | 69 |
| 913713900401 | Deco Lamp Holder Straight B22 Pink | 69 |

HSN Code: 85366110



Plug Tops Range

Specifications:

- Convenient gripping
- High heat resistant body
- Nickel plated pins
- Easy wire routing with additional space
- Sturdy body with elegant design

| 12NC | 913713678501 | 913713678601 |
|-------------|-----------------------|-----------------------|
| Description | 3 Pin Plug 6A | 3 Pin Plug 16A |
| Packaging | Single pc mono carton | Single pc mono carton |
| Shipper box | 120 pcs | 120 pcs |
| MRP | ₹ 82 | ₹ 122 |

Solution Boxes

Specifications:

- Dual Shutter Technology and One Pin Non-entry
- Overload protection with high degree of insulation
- Suitable for air conditioner, microwave oven, mixer grinder

| 12NC | Generic Name | MRP (₹) |
|--------------|------------------------------------------------------|---------|
| 913702331101 | Solution Box-25A Trip starter with Socket | 742 |
| 913702333601 | Solution Box-25A Motor starter without socket & plug | 1355 |
| 913702339101 | Solution Box-25A Trip starter without socket & plug | 929 |

HSN Code: 85369010



MCB, RCCB and ISOLATORS

MCB

Specifications:

- RoHS compliant
- ISI certified
- IP 20 protected
- Energy efficient
- Conforms to IEC 60898 and IS : 8828 standards
- Energy limiting class 3
- Trip-free mechanism
- Designed with increased air circulation enhancing efficiency and life
- Combination head captive screws
- High terminal capacity
- Available in 1P, 2P, 3P, 4P, SPN & TPN

| 12NC | Generic Name | MRP (₹) |
|--------------|-------------------------|---------|
| 913713920249 | MCB 1 Pole Curve B 16 A | 238 |
| 913713926249 | MCB 1 Pole Curve C 16 A | 250 |
| 913713929249 | MCB 2 Pole Curve C 16 A | 726 |

HSN Code: 85362030



RCCB

Specifications:

- Confirms to IEC 61000 and IS: 12460-1 standards
- High shock resistance
- Combination head captive screws
- IP 20 protection with finger-proof terminals
- High terminal capacity to accommodate a 35 sq. mm cable
- Wide residual current range from 30 mA to 300 mA
- Available in 2P & 4P

| 12NC | Generic Name | MRP (₹) |
|--------------|-------------------------|---------|
| 913713936549 | RCCB Two Pole 25A/30mA | 2999 |
| 913713938049 | RCCB Four Pole 25A/30mA | 3879 |

HSN Code: 85362040

Trip Starter

Specifications:

- Short circuit breaking capacity-3 KA with IP 20 protection
- Compatible with all ranges of Philips modular switches
- Glossy finish; easy to clean
- Available in 6A, 10A, 16A, 20A, 25A, 32A power rating

| 12NC | Generic Name | MRP (₹) |
|--------------|-------------------------------------|---------|
| 913713663701 | Trip starter - 6A - Smart Range | 257 |
| 913713663801 | Trip starter - 10A - Smart Range | 257 |
| 913713663901 | Trip starter - 16A - Smart Range | 257 |
| 913713664001 | Trip starter - 20A - Smart Range | 257 |
| 913702304401 | Trip Starter 25A - Active-white (N) | 257 |
| 913702307401 | Trip Starter 32A - Active-white (N) | 257 |

HSN Code: 85362030



Isolator

Specifications:

- Conforms to IEC 60947-3 standards
- Resistant to shock- 40 mm free fall
- Combination head captive screws
- IP 20 protection with finger-proof terminals
- High terminal capacity to accommodate a 35 sq. mm cable
- Energy efficient
- Available in 1P, 2P, 3P & 4P
- 40A to 100A

| 12NC | Generic Name | MRP (₹) |
|--------------|----------------------|---------|
| 913713934549 | Isolator 1 Pole 40 A | 309 |
| 913713935049 | Isolator 2 Pole 40 A | 452 |

HSN Code: 85362030

Distribution Box

Specifications:

- Premium quality powder coating applied to avoid rusting
- Level marking for easy flush mounting
- Masking sheet provision to avoid cement spillage
- Optional wire entry on side walls

Available range

- Single Door SPN 4Way & 8Way
- Double Door SPN 4Way to 16Way
- Double Door TPN 4Way to 8Way

| 12NC | Generic Name | MRP (₹) |
|--------------|----------------------|---------|
| 913713968701 | Single Door SPN 4Way | 1200 |
| 913713968901 | Double Door SPN 4Way | 1875 |

HSN Code: 85371000



LED Lamp Drivers

Sumo Xtreme 136

36W

Specifications:

- Best surge protection for lamp safety
- Unique end-of-life protection circuit
- Intelligent auto cut-off @ 330 V for lamp safety

| 12NC | Description | MRP (₹) | Pack size |
|--------------|--------------------|---------|-----------|
| 913712910814 | Sumo Xtreme136 TLD | 250 | 30 |



Sumo LED Drivers

2W-4W, 5W-7W, 8W-10W, 11-15W, 16W-21W

Specifications:

- Isolated design with 2 kV surge protection
- Optimized for Indian conditions
- Instant flicker-free start/long lasting
- Over-voltage protection with wide operating range surviving 320V@48 hours and 350V@2hrs

| 12NC | Description | MRP (₹) |
|--------------|-----------------|---------|
| 929001469106 | Sumo LED 2-4W | 120 |
| 929001469206 | Sumo LED 5-7W | 150 |
| 929001478106 | Sumo LED 8-10W | 200 |
| 929001469406 | Sumo LED 11-15W | 250 |
| 929001469506 | Sumo LED 16-21W | 300 |

Constant Voltage LED Drivers

Current available: 2A / 5A / 12.5A / 25A

Specifications:

- High standards of safety
- Reliable, robust and versatile
- Short circuit and over voltage protection
- Compact size
- Class II (no need of earthing)
- Application – with LED Tape/Strips

| 12NC | Description | MRP (₹) |
|--------------|------------------------------|---------|
| 929002821406 | LED Transformer 24W 2A 12VDC | 350 |
| 929001417466 | LED Transformer 60W 5A 12VDC | 799 |
| 929003421606 | LED Transformer 150W 12.5A | 3000 |
| 929003413606 | LED Transformer 300W 25A | 4000 |



EL Signage

36W

| 12NC | Description | Pack size |
|--------------|-------------|-----------|
| 913712910814 | EL Signage | 30 |



Micropower Electronic Ballast

For TL/PL-S/-T/-C lamps (India)

Specifications:

- Compact, light weight, high frequency electronic ballast designed for TL (6-18W) and compact fluorescent PL (7-24W) lamps.

| 12NC | Description | MRP (₹) | Pack size |
|--------------|----------------|---------|-----------|
| 913702243012 | EBS 114 230 SH | 450 | 30 |
| 913702243112 | EBS 118 230 SH | 450 | 30 |







Light that cares

Cleaner and odorless environment

3ⁱⁿ1 *Illuminates
Disinfects
Deodorizes*



No harmful
UV-C leakage^



Bright light
1500 lumens



Easy to
install



Control through
wall switch toggle

UV-C Range


EyeComfort
Technology[#]



UV-C Desk Silver

24W

Specifications:

- Easy and safe to use and disinfect
- Voice Alarm to indicate working status
- Microwave sensor detects moving objects
- 10 years working lifetime
- Equipped with Philips high quality UVC lamp
- Kills 99.99% hazardous germs, mites and virus
- No ozone emission
- Ideal for Living Room, Bedroom, Washroom, Kitchen

HSN Code: 929002477008

MRP: ₹14,999



UV-C AirGuard Light

32W

(Light+Disinfection+Odor Removal)

Specifications:

- Disinfects in 30 Minutes
- Deodorizes in 60 Minutes
- Bright functional light
- No harmful UV leakage
- Dual Mode for easy operation and user control
- Ideal for Cabins, Shops, Living Rooms, Washrooms

HSN Code: 929002693901 - WW

929002694301 - CDL

MRP: ₹4,500



UV-C Disinfection System

10L, 15L, 30L

Specifications:

- Disinfect the products exposed to it
- Can be used in Homes/Retail/Offices conveniently within 2 to 8 minutes.
- Kills 99.99% germs
- Auto cut-off on sudden door opening while functioning
- Pre-set modes of 2, 5 or 8 minutes
- Standard timer of 3 minutes
- Ideal for Grocery, Milk Packets, Toys, Vegetables, Laptops

MRP: ₹8,990, ₹10,990, ₹12,990



HSN Code: 929002473813-10L

929002473913-15L

929002474013-30L

UV-C Disinfection System 35L

Specifications:

- Disinfect the products exposed to it
- Can be used in Homes/Retail/Offices conveniently within 2 to 8 minutes.
- Kills 99.99% germs
- Auto cut-off on sudden door opening while functioning
- Pre-set modes of 2, 5 or 8 minutes
- Standard timer of 3 minutes
- Ideal for Grocery, Milk Packets, Toys, Vegetables, Laptops

HSN Code: 929002474014

MRP: ₹15,000



